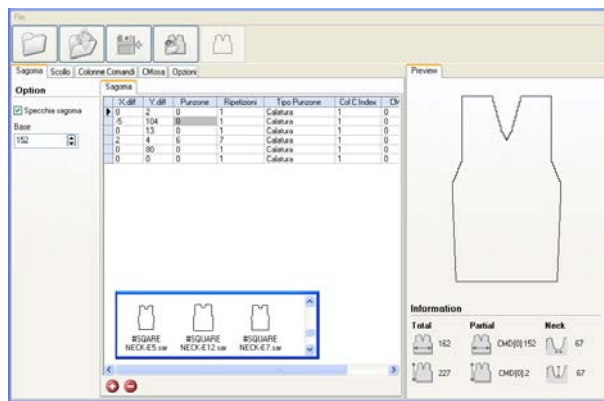
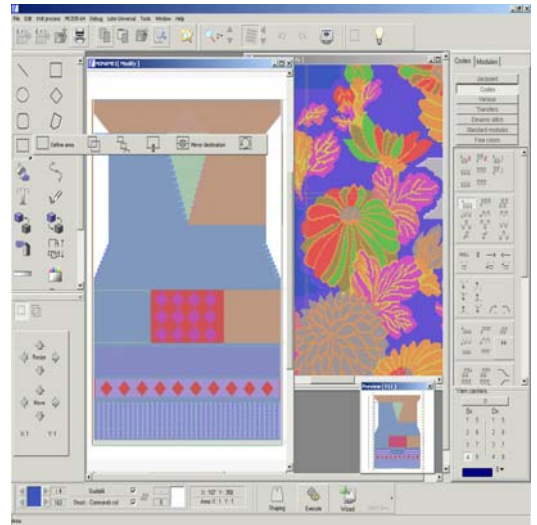


# LOGICA

## LKS Logica Knitting System

**Introduction:** software that we develop is studied in detail for the research and development technic stitch of the FullyBody, Jacquard, Intarsia, FullyFashion, Multi-Gauge, Structured design for many kind of machine . The system has been developed by exhausting the most advanced technology by using particular tools which are technique specific to the art of all technic stitch. This makes the system easy and fast, and allows the less advanced user to make the designs – even the highly complex ones – using the auto command option already container in the program, but at the same time gives the more experienced users the ability to personalize or create new auto commands that correspond to each specific requirement.

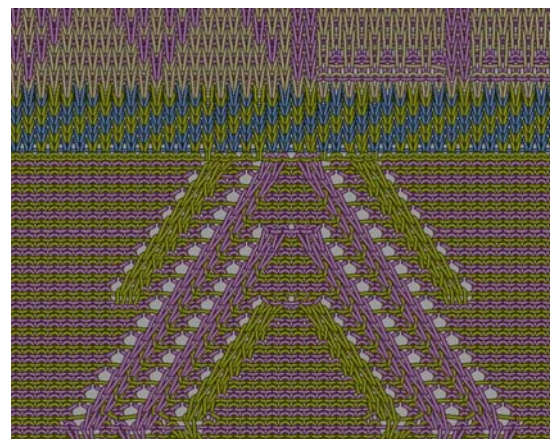
**Software Characteristics:** The basic software is personalized for each company through appropriate set-ups: This allows us to adapt the software relatively fast for the various types of machine, and with very diverse characteristics. We try to summarize in just a few lines, the principal characteristics of the designs and then those of the machine programs. The programming part of the machine is completely integrated within the graphical part of the design and is usable with all Windows platforms (2000,NT,XP,Vista and more...) with whatever resolution.



**Graphics:** The graphics are very fast, multi-window and are complete with a lot of facilities to help the user, for example, to copy, replicate, geometrical functions, undo, grids and graphs etc. The tools are easy to use and are studied in detail for the FullyBody sector in the creation of the designs. It is possible to read the majority of the existing standard graphic formats in the market with the possibility of reading other graphical formats of the competitor companies. It is also possible to insert a Track Baal to speed up the movement of the video images. It is facilitated with a back up help line for the end user. It also supports Unicode for oriental languages. It records from scanners, prints in mesh and has controlled color reduction...etc.

**Programming:** Regarding the programming, the design is made using colours chosen from a gallery, and each automation is managed through modules which allow fast and easy means of modification. Through these modules it is possible to manage an entire piece of clothing automatically, simply recalling the relative modules in the different processes. The structure of our modules allows us to reuse them in a simple way. This makes us able to reduce the number of modules by 40% in respect to other programming systems....

They are capable of doing jacquard, marquetry with and without Yarn carrier intarsia, cast off, shaped (with the shape program). It is possible to see a test sample and to watch it at every stage of the machine's process and where eventually mistakes may appear. This test can be seen also as a Simulation Stitch to see the realistic results with the point stitch. You can develop the different sizes by adding windows or have more designs inside the same window and elaborate on just one that may interest you more. It is possible to use the shaping which, reduces the time taken to create the shapes and the relative size changes. The simulation stitch allows you to verify the final result with the effect of a real sweater, as if the design was really made on the machine to give an idea of what the precise end results will be. It is possible to adapt the system to work with various models of machines in a reduced time, since it uses a configuration file to adapt itself to the characteristics of the machine. This gives the possibility to create new models without modifying the software and also with the possibility to personalize some windows. The system requires around 40% less modules that other systems use for a complete article of clothing. This saves a notable amount of time in the creation of the modules and therefore simplifies the creation. Another great advantage in the use of the software is given in the simplicity of its usage. This allows the reduction of the training time and lets the user be up and running in little time.



**Logica s.r.l.** software and electronic Engineering

41037 Mirandola - MO (Italy) - Via Maestri del lavoro, n. 8 Tel. +39 0535 21916 - Fax +39 0535 21518

[www.logicanetsolution.com](http://www.logicanetsolution.com)

[info@logicanetsolution.com](mailto:info@logicanetsolution.com)